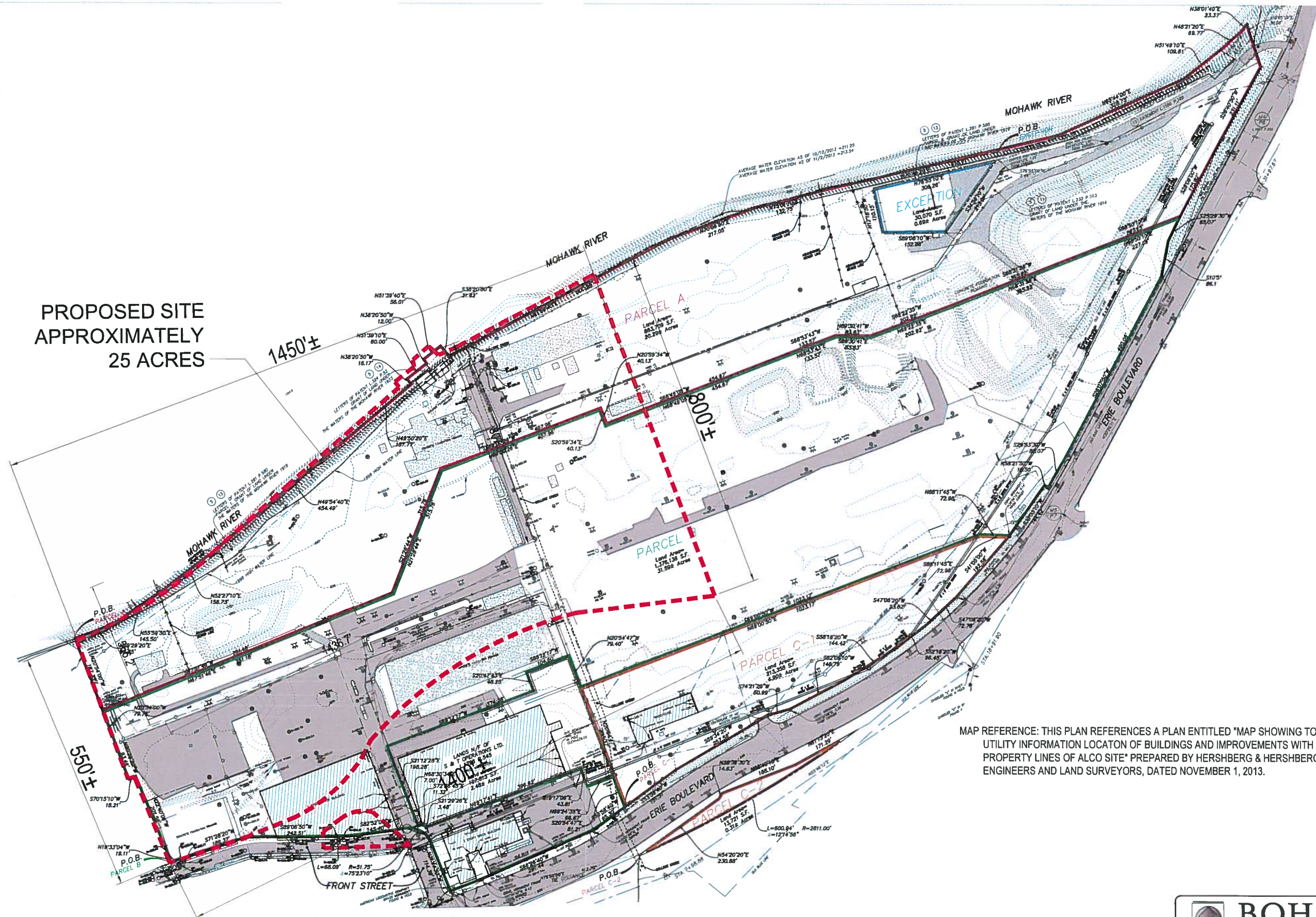




PROPOSED SITE  
APPROXIMATELY  
25 ACRES



MAP REFERENCE: THIS PLAN REFERENCES A PLAN ENTITLED "MAP SHOWING TOPOGRAPHIC & UTILITY INFORMATION LOCATON OF BUILDINGS AND IMPROVEMENTS WITH REFERENCE TO PROPERTY LINES OF ALCO SITE" PREPARED BY HERSHBERG & HERSHBERG CONSULTING ENGINEERS AND LAND SURVEYORS, DATED NOVEMBER 1, 2013.

# EXISTING CONDITIONS SCHEMATIC

SCALE: NOT TO SCALE



**BOHLER  
ENGINEERING**  
CIVIL & CONSULTING ENGINEERS SURVEYORS  
PROJECT MANAGERS  
ENVIRONMENTAL CONSULTANTS  
LANDSCAPE ARCHITECTS  
5 COMPUTER DRIVE WEST, SUITE 203  
ALBANY, NY 12205  
Phone (518) 438-0900  
Fax (518) 438-0900  
[www.BohlerEngineering.com](http://www.BohlerEngineering.com)

THIS PLAN IS A PRELIMINARY DESIGN AND SHOULD NOT BE USED FOR CONSTRUCTION PURPOSES WITHOUT WRITTEN APPROVAL FROM BOHLER ENGINEERING. THE CLIENT IS RESPONSIBLE FOR OBTAINING ALL NECESSARY PERMITS AND APPROVALS FROM THE APPROPRIATE AGENCIES.