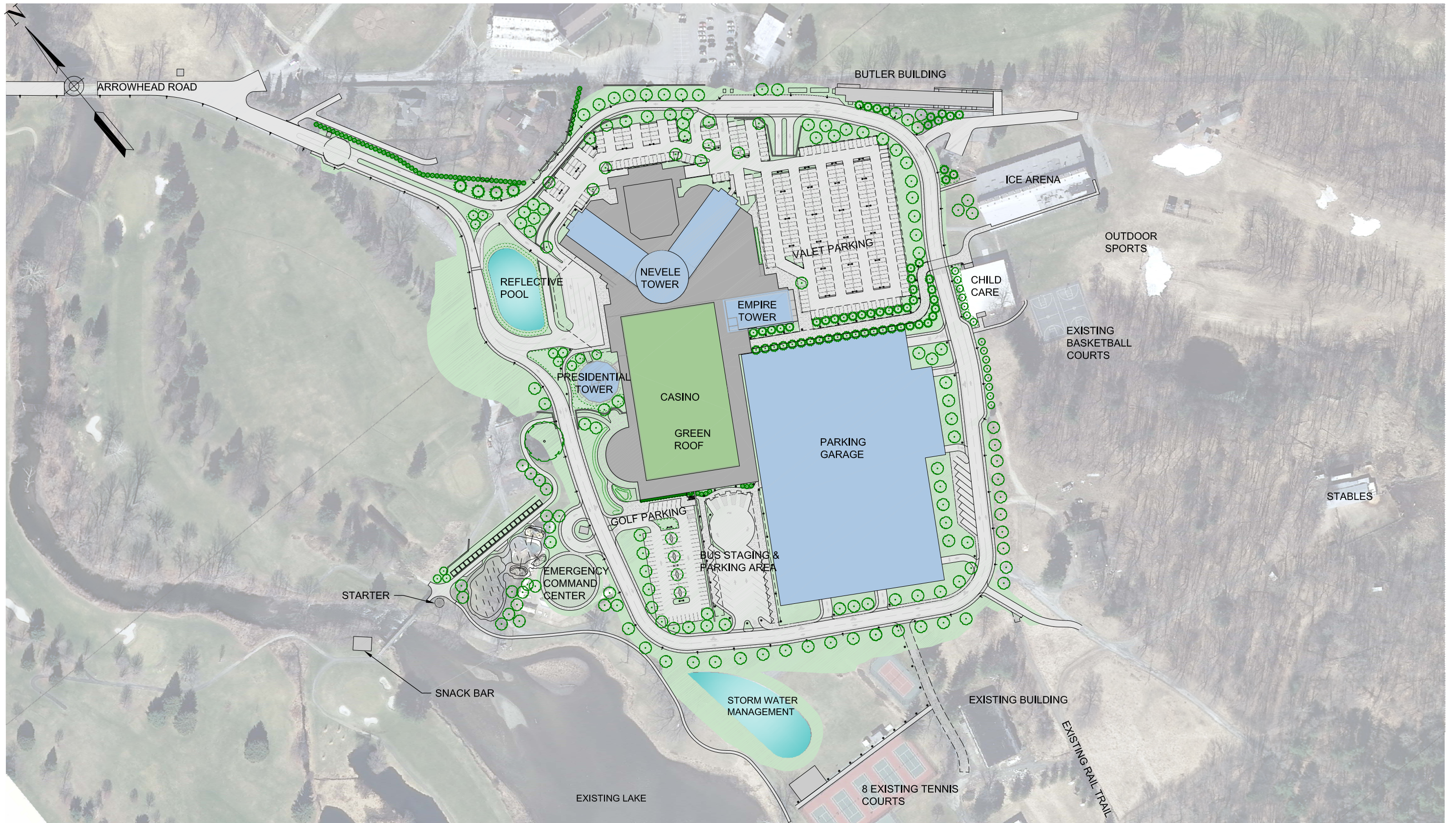


Drawing Name: S:\3\31200-31299-31225-00\ENG\DWG\90\_2-1-2\_31225-00\_CONCEPT\_RENDERING.dwg Date Printed: Jun 12, 2014, 9:31am



CHAZEN ENGINEERING, LAND SURVEYING & LANDSCAPE ARCHITECTURE CO., D.P.C.

**Dutchess County Office:**  
21 Fox Street  
Poughkeepsie, New York 12601  
Phone: (845) 454-3980

**Capital District Office:**  
547 River Street  
Troy, New York 12180  
Phone: (518) 273-0055

**North Country Office:**  
375 Bay Road  
Queensbury, New York 12804  
Phone: (518) 812-0513

THIS MAP IS A PRODUCT OF THE CHAZEN COMPANIES. IT SHOULD BE USED FOR REFERENCE PURPOSES ONLY. REASONABLE EFFORTS HAVE BEEN MADE TO ENSURE THE ACCURACY OF THIS MAP. THE CHAZEN COMPANIES EXPRESSLY DISCLAIMS ANY RESPONSIBILITY OR LIABILITIES FROM THE USE OF THIS MAP FOR ANY PURPOSE OTHER THAN ITS INTENDED USE.

# NEVELE

RESORT CASINO SPA

**NEVELE RESORT CASINO & SPA**

**CONCEPT PLAN**

TOWN OF WAWARSING, ULSTER COUNTY, NEW YORK

Drawn:	CJB
Date:	6/11/14
Scale:	1"=200'
Project:	31225.02
Figure:	2.1.3A